

SETTING UP THE WORM BED

Worms need moist bedding to live and any moistened carbon material will work well, such as brown leaves. Tiger worms are the best to use and we provide them for FREE. Place the worms in the bedding.

HARVESTING THE FERTILISER

The worm poos are a dark fine compost and will be underneath the food scraps. Scoop out the top layer of food scraps and worms into a bucket (temporarily). Remove the compost you want to use on your garden. Put the top layer back into the container with fresh bedding and start again.

The information in this brochure is a guide only, and is not a statutory document

December 2023

FOR MORE INFORMATION CHECK OUT OUR WEBSITE:

www.ruapehudc.govt.nz/ourservices/waste-minimisation/Pages/Compost.aspx



Ruapehu District Council

Private Bag 1001, Taumarunui 3946
59-63 Huia Street, Taumarunui 3920

Contact us 24 hours
Taumarunui 07 895 8188
Ohakune 06 385 8364
Raetihi 06 385 4447



Email info@ruapehudc.govt.nz
Website www.ruapehudc.govt.nz
Facebook [@ruapehudc](https://www.facebook.com/ruapehudc)



A GUIDE TO WORM FARMS

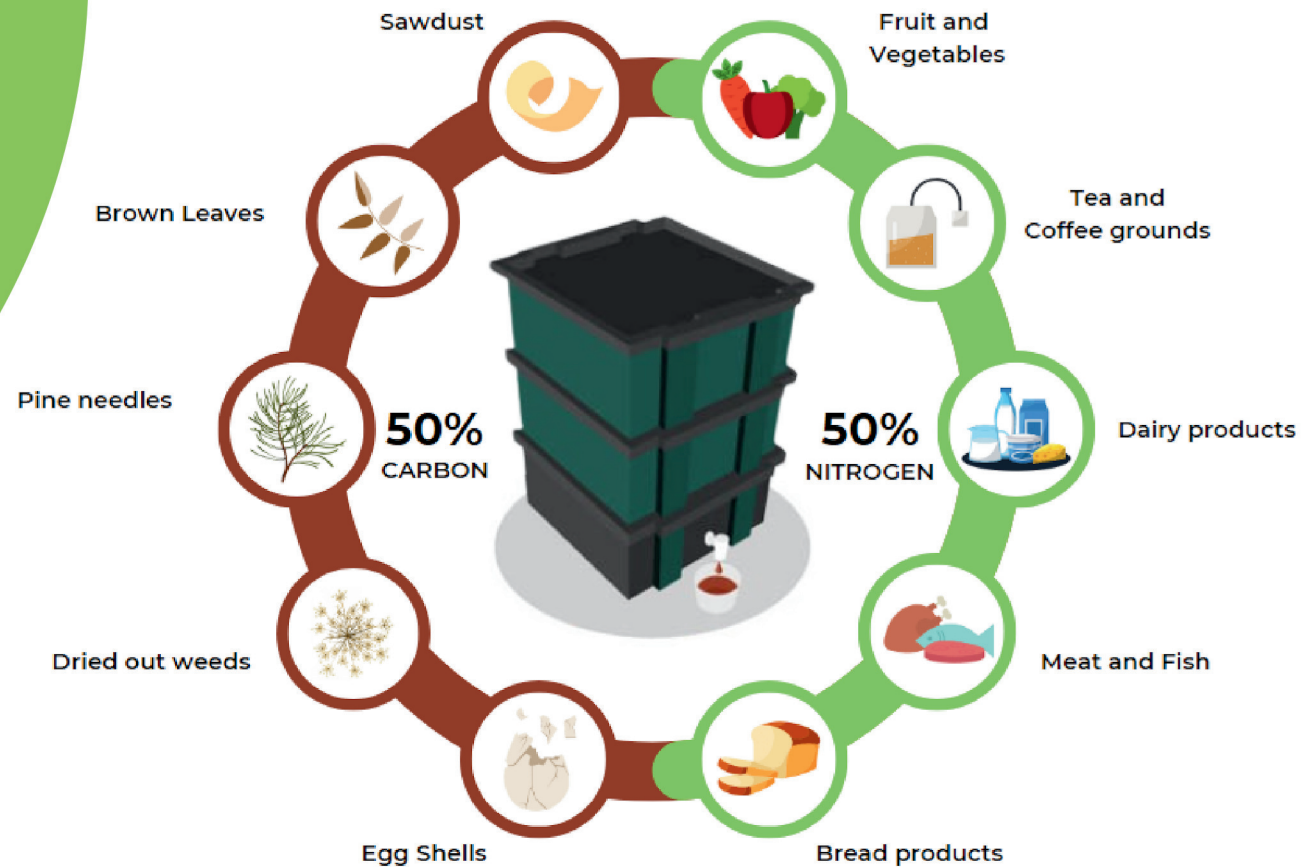
is nature's way of recycling



FEEDING WORMS

Worms can eat all food scraps and carbon such as sawdust, brown leaves, pine needles, dried out weeds and egg shells. The smaller the pieces of food, the faster it will break down so the worms can suck it up (they don't have teeth). Rodents will be attracted to some types of food. You can cover the top of your food scraps with a piece of carpet or cotton towel. This will maintain moisture levels and reduce flies.

**WORM FARMING IS
AN EASY WAY TO
TURN YOUR FOOD
WASTE INTO
FERTILISER. IT
STOPS METHANE
GAS PRODUCTION
BY DIVERTING FOOD
WASTE FROM
LANDFILL.**



CHOOSING A HOME FOR YOUR WORMS

Work out how much food waste you create in a week and choose a worm farm that will be big enough to handle this (some worm farms are small with stackable containers, others can be upcycled wheelie bins or baths).

If you want to collect the worm wees (a liquid fertiliser) you will need an enclosed container with a tap or small holes. An old bath is perfect, complete with plug hole!

If you want to keep rodents out it will need to be an enclosed container with a lid. Alternatively you can create a mound in your garden and cover it with old carpet.