

Consumer engagement

- model of care public presentations
- press releases
- CHF updates
- health literacy messages

Road Less Travelled presentation
16/05/16

'Project Update' presented at CHF

Presentation to Annette King & Ruth Dyson (Labour Health Caucus)
02/08/2016

Have met with Hiraina Tarawa and Michelle McKenzie from the social sector trials and discussed model of care with them / potential ways forward.

Information systems

- exploration of working models
- telemedicine progress
- tele-education opportunities

Electronic reports for whanau ora referrals to be forwarded monthly to project coordinator

Tele-health link used for meetings where appropriate

Exploring with Council re having a 'Taumarunui Integrated Health Care model' page on their website

Multidisciplinary meetings

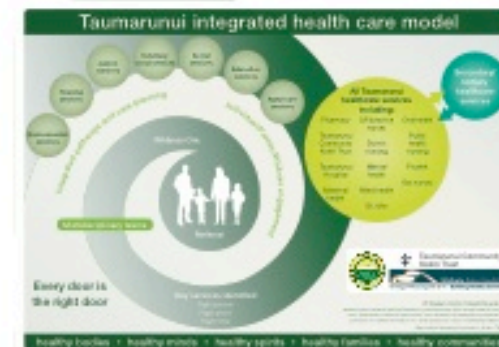
- participation in MDT meetings
- Pharmacy and GP regular meetings

Whanau Ora MDT meetings continue

Regular rest home and hospital meetings continue

Integrated nursing staff meetings re-established at Taumarunui Hospital (ward nurses, PHNs, DNs)

MO meetings at hospital following M&M meetings, GPs invited.



Integrated leadership

- stocktake report
- recruitment strategies
- promote model of care with key stakeholders
- use of St John at Hospital
- NZRIH and High School relationships
- wider related projects (midwifery; nurse led assessment; whanau ora developments; pharmacy initiatives)

Meetings for pathway implementation held. Farewell to Frana Chase (Whanau Ora manager Kokiri). Piki Tairaoa now attending pathway implementation meetings and key liaison with for Kokiri Trust.

Invitation to Allison Annand (social sector trials) to Governance meetings.

Referral processes

- community directory
- electronic referrals to whanau ora
- transport model report

Significant increase in referrals from ED over the past couple of month. Checklist strategy employed and now changed to and alert of the file with an audit to follow in September. Data report from checklist information attached.

PHNs reviewing all child ED presentations and identifying gaps / opportunities missed and following them up.

Meeting with oral health tem to iron out issues re oral health pathway

Integrated training and professional development

- orientation booklet
- retrospective induction
- training calendar

Tele education session planning for Gerontology Skills study days attended. 3 booked so far to attend session in Taumarunui at end of August.

Education sessions circulated via email as they arise.

Decision made to delay development of vulnerable childrens pathway / workshop in order to see what happens with MSD changes and social sector trials.

Integrated care pathways

- child asthma pathway implementation
- development and implementation of pharmacy; complex child; oral health; and generic pathways

Active referral pathways:

1. Sore throat
2. Child oral health
3. Medication Adherence
4. Prescription Medication Pathway active.
5. Child Asthma,
6. Whanau Ora
7. Smoking Cessation
8. Older Adult

Also attended a session re maternity service sustainability in Taumarunui. Noted need to align maternity services with model and potentially develop a pathway / look at existing pathways to feed into. Maternity added to agenda for Governance meetings.