

Taumarunui integrated health care model

What does it mean for you?

What does all this mean?

Every door is the right door

Wherever you enter the healthcare system you are connected to the right service for **you**

Collaboration and integration

Local health and social services working together to provide good health care for your Taumarunui community

The right care provided at the right place by the right person at the right time
Ensuring you receive the best possible care for **your** health needs

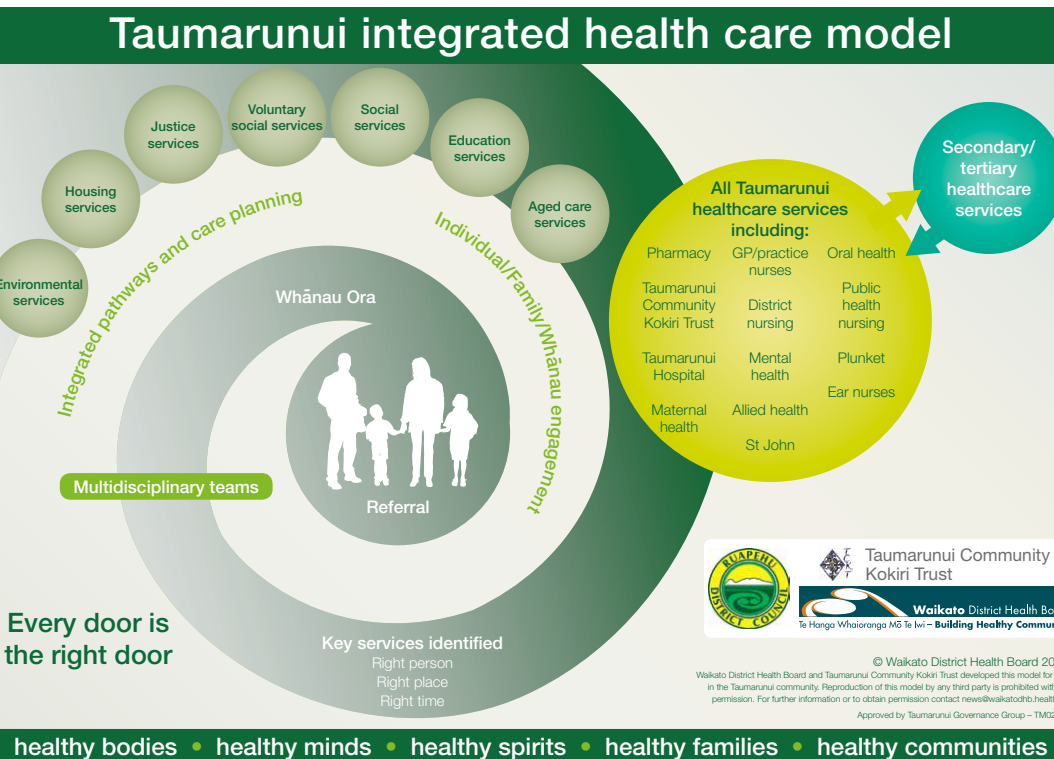
Whānau Ora
Health and social services working together with **you** and **your family/whānau**

Best use of healthcare workforce
Making the best use of the local healthcare workforce to meet the health care needs of **your** Taumarunui community

How are we going to make it happen?

Integrated leadership

Taumarunui health and social services leaders working together to improve services for your Taumarunui community



Reduce health inequalities
Providing health care services for those most vulnerable people in the Taumarunui community and ensure fair care for **all**, so that those who need it most receive it

Consumer engagement
The Taumarunui community will have the opportunity to have input into their local health care services

Integrated training and professional development
Shared training and networking opportunities for health and social services working in the Taumarunui community

Referral processes
Moving you between the health services **you** need easily and in a timely way

Multidisciplinary meetings
Health and social services working together to provide joined up care for **you** and **your family/whānau** so **you** receive the best possible care

Information systems
Using information systems to simplify communication between health care services in the Taumarunui community

Planning care with you and your family/whānau and a shared clear understanding of who does what, when they do it, how they do it, and what you can expect