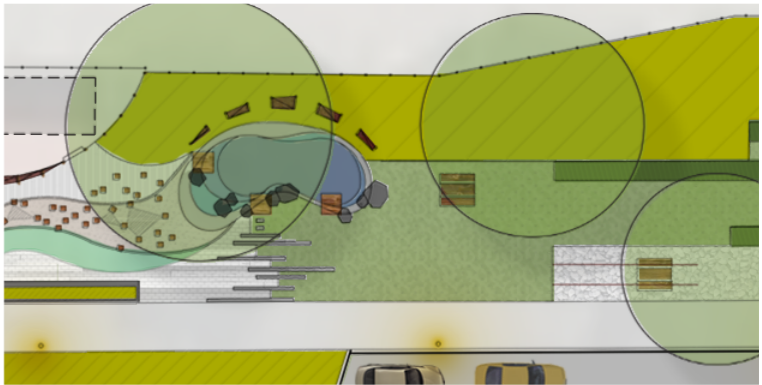
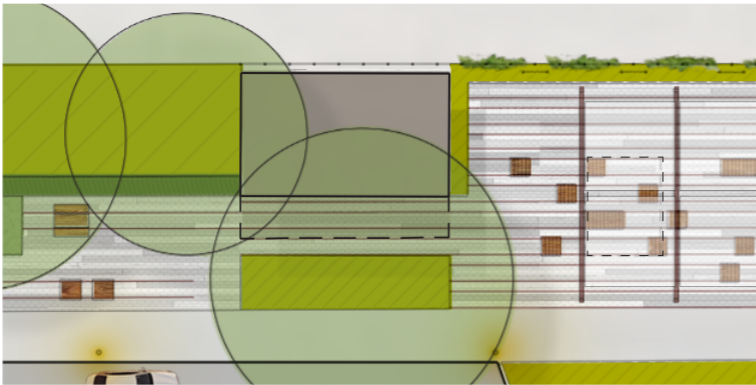


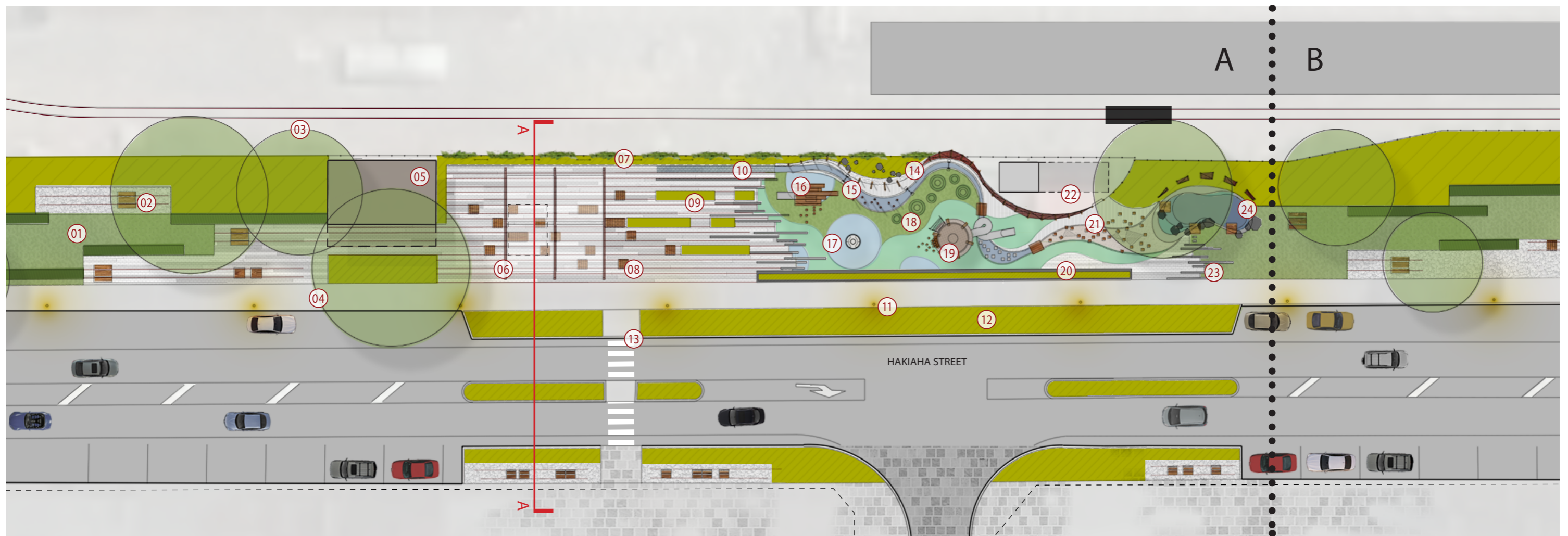
TAUMARUNUI TOWN CENTRE

HAKIAHA STREET, TAUMARUNUI



HAKIAHA STREET DEVELOPED CONCEPT DESIGN

August 2017



PLAN A Notes

- 01 Park transition zone featuring open, grassed flexible areas, park seating and family gathering opportunities, and tidied under-story planting with retained specimen trees.
- 02 Picnic table setting. Some tables to be stationary, some to be on recycled rails for adjustable sun / shade positioning
- 03 Existing trees to be retained
- 04 Existing ginkgo tree to be retained and protected during demolition of old library building
- 05 New toilet block, seek architect through competition process. Final design to be an integrative approach to the larger town centre design
- 06 Flexible canopy structure for seasonal shade or rain cover
- 07 Green wall barrier to railroad with pockets of permeability for views
- 08 Seating elements on rails with ability to roll back and forth for customised seating opportunities. Seats could be gathered to form a block stage as well.

- 09 Town centre plaza rain gardens
- 10 Surface water strip water feature that offers engagement for all ages. Flows into main winding 'river' water feature
- 11 Strong vertical light pole rhythm
- 12 Planted buffer to road edge, creating definition to plaza and a protective edge for pedestrians
- 13 Existing pedestrian crossing enhanced with planted medians
- 14 Warped rail fence, integrating steel panels and timber sleepers in a sculptural and iconic backdrop to the town centre space
- 15 Water play area referencing rivers associated with warped wall feature.
- 16 Custom toddler play element with timber sleeper climbing elements and stainless steel slide; features an industrial aesthetic and local historical and cultural themes
- 17 Accessible spinner play element
- 18 Synthetic turf play mounds

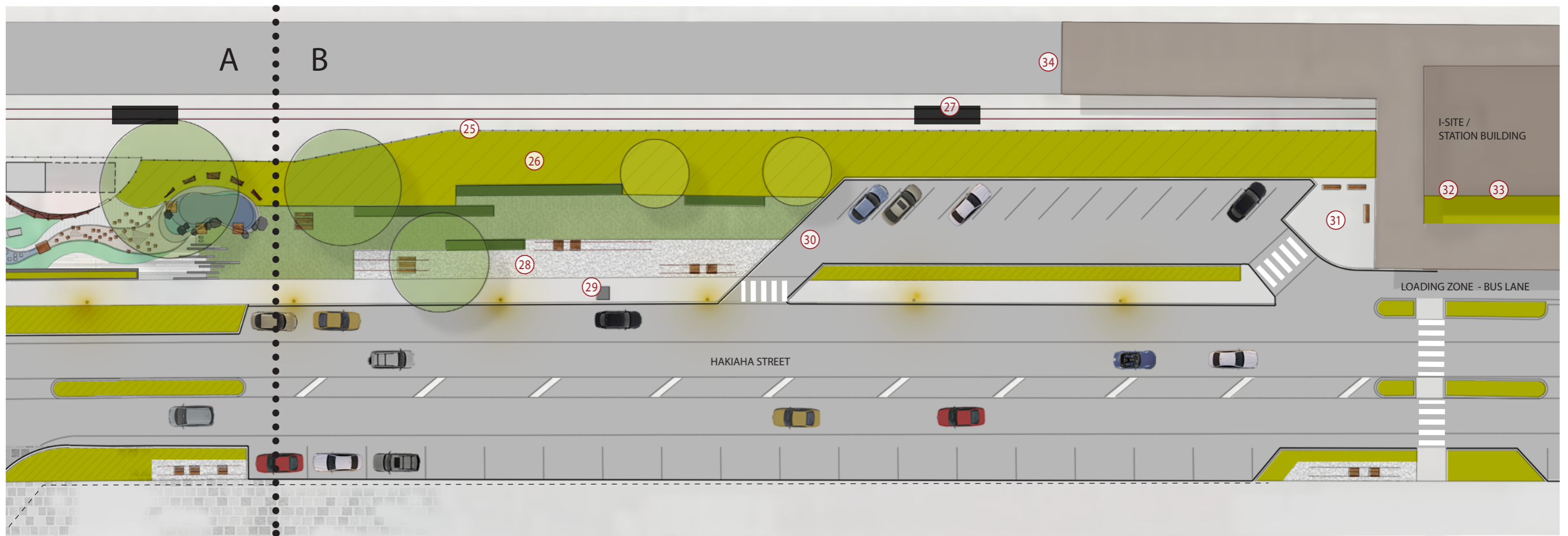
- 19 Custom look out tower with high play value and integration of stainless steel slide
- 20 Raised planter with seating edge to offer additional protection from the street and provide a place for parents to sit and supervise play.
- 21 Custom timber climbing and net play feature for older ages
- 22 Existing and proposed pump room for water features, concealed behind feature wall
- 23 Connective pavement banding to provide transition between spaces
- 24 Renovated fish pond to offer stronger engagement opportunities and sculptural elements

PLAN B Notes

- 25 Fence with a degree of permeability that provides views of Hakiha Street businesses to passengers on railway.
- 26 Planting that is reflective of Taumarunui's character and local context.

- 27 Rail car experience by local operator
- 28 Small civic / gathering space associated with Taumarunui clock tower.
- 29 Taumarunui Clock Tower to be retained
- 30 Modified car park to offer safer pedestrian crossings and clear links to Taumarunui Station and i-Site. 2 car parks impacted. Bus parking to be relocated, location TBD.
- 31 Seating provided in waiting area adjacent to Taumarunui Station platform and i-Site
- 32 Proposed Taumarunui Station renovation, with i-Site moving to West corner for stronger relationship with town centre, adjacent parking and arriving visitors
- 33 Train Museum proposed to be relocated to Taumarunui Station building
- 34 Existing Taumarunui Station platform





PLAN A Notes

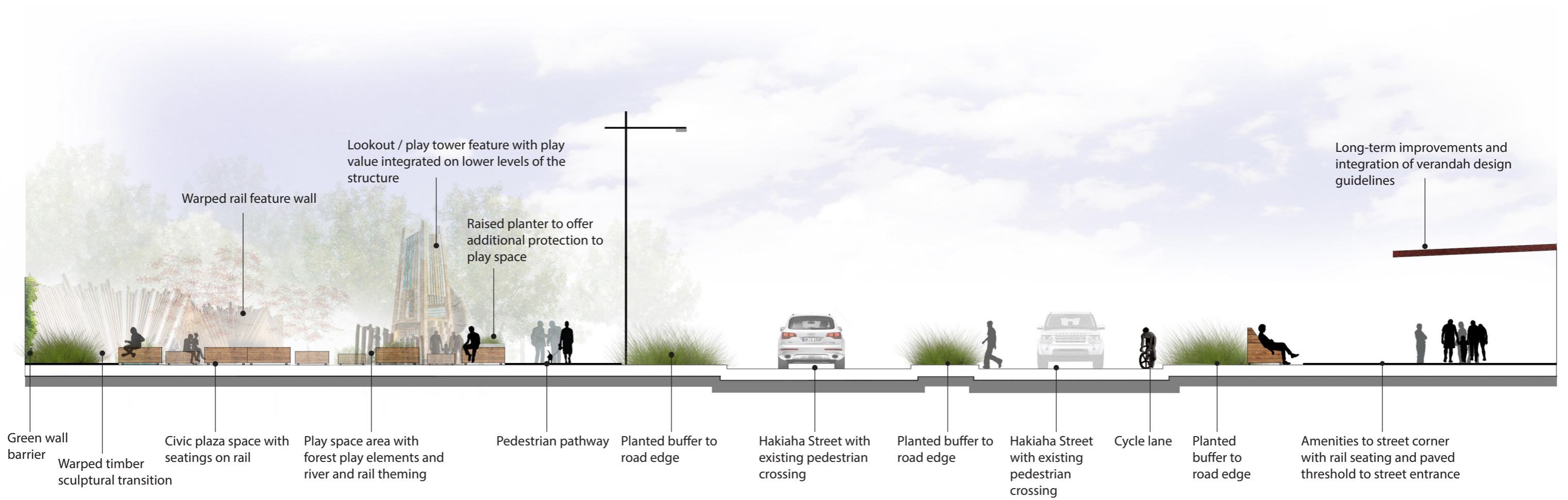
- 01 Park transition zone featuring open, grassed flexible areas, park seating and family gathering opportunities, and tidied under-story planting with retained specimen trees.
- 02 Picnic table setting. Some tables to be stationary, some to be on recycled rails for adjustable sun / shade positioning
- 03 Existing trees to be retained
- 04 Existing ginkgo tree to be retained and protected during demolition of old library building
- 05 New toilet block, seek architect through competition process. Final design to be an integrative approach to the larger town centre design
- 06 Flexible canopy structure for seasonal shade or rain cover
- 07 Green wall barrier to railroad with pockets of permeability for views
- 08 Seating elements on rails with ability to roll back and forth for customised seating opportunities. Seats could be gathered to form a block stage as well.

- 09 Town centre plaza rain gardens
- 10 Surface water strip water feature that offers engagement for all ages. Flows into main winding 'river' water feature
- 11 Strong vertical light pole rhythm
- 12 Planted buffer to road edge, creating definition to plaza and a protective edge for pedestrians
- 13 Existing pedestrian crossing enhanced with planted medians
- 14 Warped rail fence, integrating steel panels and timber sleepers in a sculptural and iconic backdrop to the town centre space
- 15 Water play area referencing rivers associated with warped wall feature.
- 16 Custom toddler play element with timber sleeper climbing elements and stainless steel slide; features an industrial aesthetic and local historical and cultural themes
- 17 Accessible spinner play element
- 18 Synthetic turf play mounds

- 19 Custom look out tower with high play value and integration of stainless steel slide
 - 20 Raised planter with seating edge to offer additional protection from the street and provide a place for parents to sit and supervise play.
 - 21 Custom timber climbing and net play feature for older ages
 - 22 Existing and proposed pump room for water features, concealed behind feature wall
 - 23 Connective pavement banding to provide transition between spaces
 - 24 Renovated fish pond to offer stronger engagement opportunities and sculptural elements
-
- PLAN B Notes**
- 25 Fence with a degree of permeability that provides views of Hakiaha Street businesses to passengers on railway.
 - 26 Planting that is reflective of Taumarunui's character and local context.

- 27 Rail car experience by local operator
- 28 Small civic / gathering space associated with Taumarunui clock tower.
- 29 Taumarunui Clock Tower to be retained
- 30 Modified car park to offer safer pedestrian crossings and clear links to Taumarunui Station and i-Site. 2 car parks impacted. Bus parking to be relocated, location TBD.
- 31 Seating provided in waiting area adjacent to Taumarunui Station platform and i-Site
- 32 Proposed Taumarunui Station renovation, with i-Site moving to West corner for stronger relationship with town centre, adjacent parking and arriving visitors
- 33 Train Museum proposed to be relocated to Taumarunui Station building
- 34 Existing Taumarunui Station platform

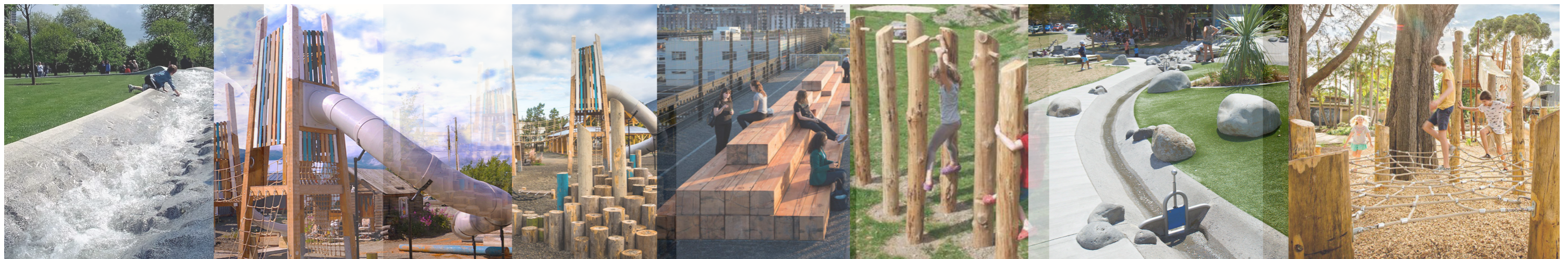
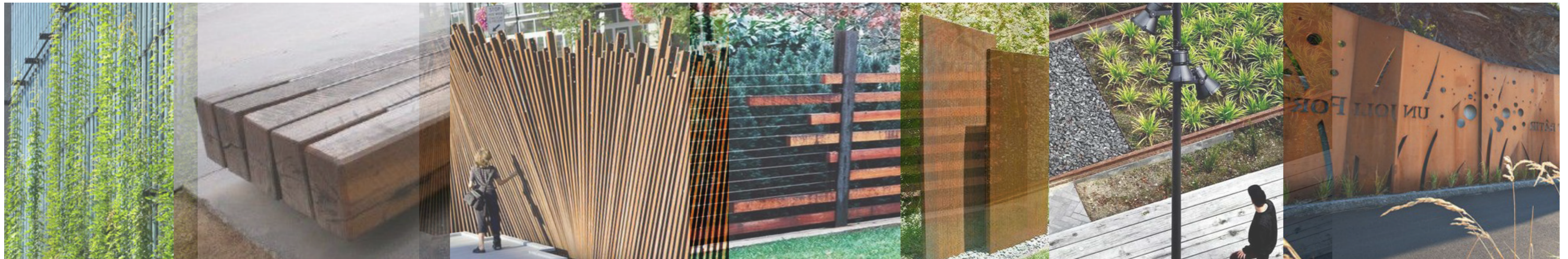
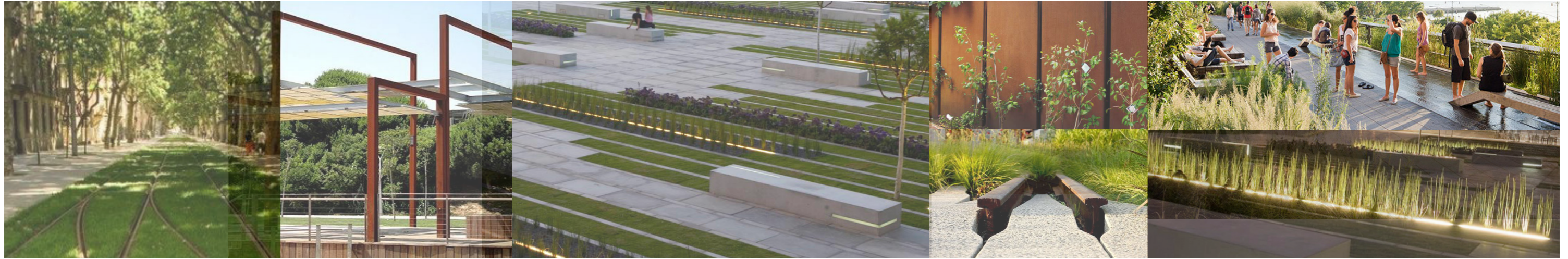


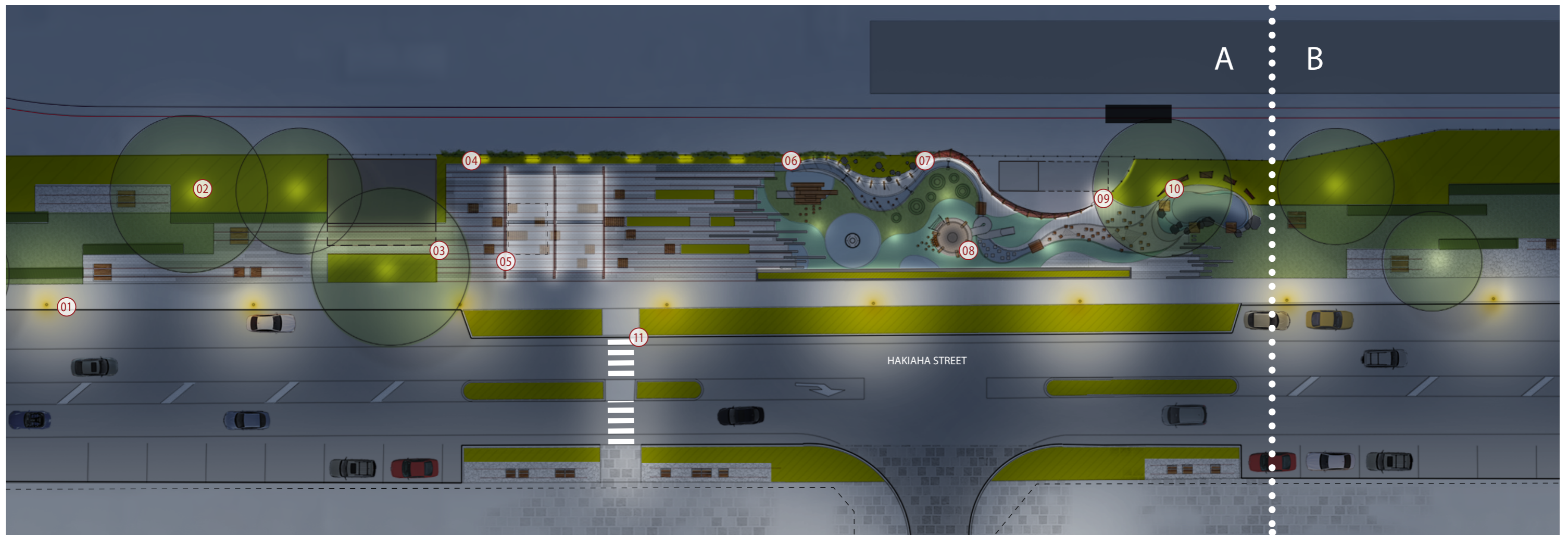


DAILY MODE - Movable rail seats adjusted to where you want to sit

EVENT MODE - Movable rail seats arranged into a stage, linking together with latches on folding backrests







PLAN A Notes

- 01 Pole top street lighting. Simple, contemporary fitting design
- 02 Specimen tree up-lighting
- 03 Architectural lighting associated with new public toilet
- 04 Spot lighting on railway fence 'fracture' points to create visual relief and light the darkest areas of the town centre plaza space
- 05 Integrated lighting of shade structure to allow seasonal use and evening community events
- 06 Ground recessed LED up-lighting of sculptural timber sleepers
- 07 Ground recessed LED strip lighting to highlight feature wall
- 08 Architectural up-lighting on lookout / play tower to highlight this iconic feature
- 09 Additional wall-mounted spot light to give extra lighting near feature wall maintenance entrance.

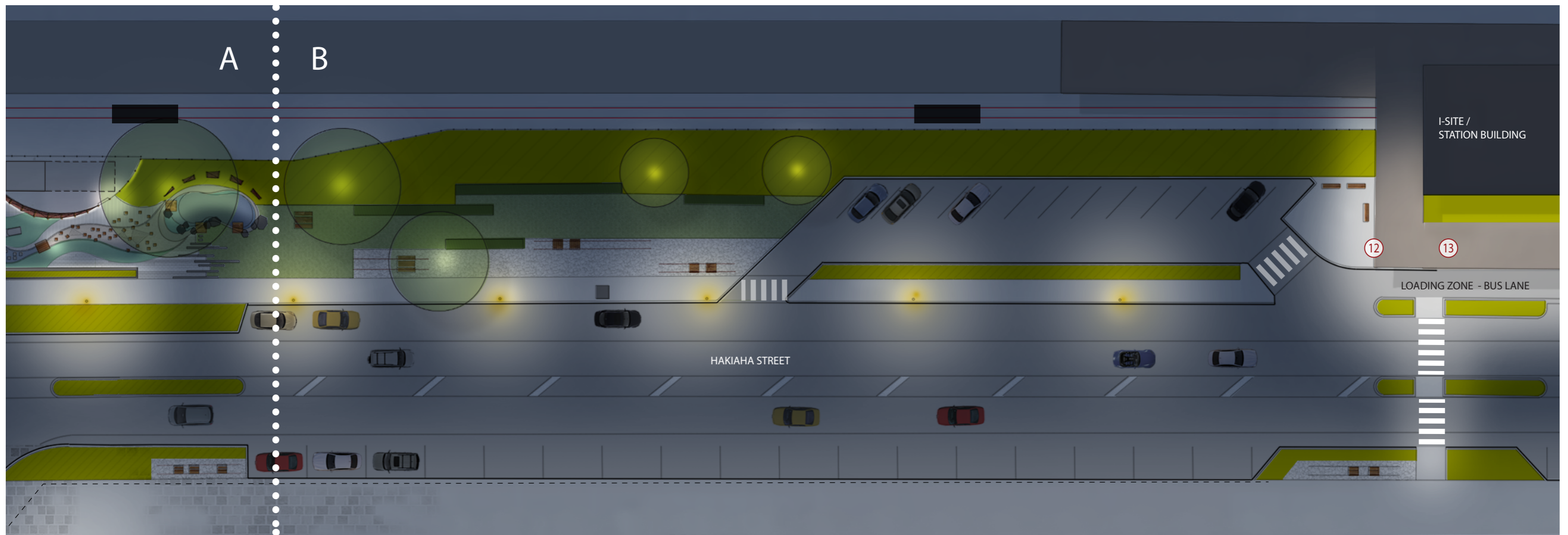
- 10 Ground recessed LED up-lighting on sculptural wall panels associated with the fish pond
- 11 Ensure lighting levels associated with safe pedestrian crossings are achieved with new fittings.



PLAN B Notes

- 12 Ceiling mounted lighting on verandah structure of the rail station building to provide spill out lighting in the adjacent waiting area.
- 13 Bus / rail station and tourist information to be lit by ceiling mounted lighting on the verandah and up-lighting where appropriate, to ensure a hospitable environment for visitors.





PLAN A Notes

- 01 Pole top street lighting. Simple, contemporary fitting design
- 02 Specimen tree up-lighting
- 03 Architectural lighting associated with new public toilet
- 04 Spot lighting on railway fence 'fracture' points to create visual relief and light the darkest areas of the town centre plaza space
- 05 Integrated lighting of shade structure to allow seasonal use and evening community events
- 06 Ground recessed LED up-lighting of sculptural timber sleepers
- 07 Ground recessed LED strip lighting to highlight feature wall
- 08 Architectural up-lighting on lookout / play tower to highlight this iconic feature
- 09 Additional wall-mounted spot light to give extra lighting near feature wall maintenance entrance.

- 10 Ground recessed LED up-lighting on sculptural wall panels associated with the fish pond
- 11 Ensure lighting levels associated with safe pedestrian crossings are achieved with new fittings.



PLAN B Notes

- 12 Ceiling mounted lighting on verandah structure of the rail station building to provide spill out lighting in the adjacent waiting area.
- 13 Bus / rail station and tourist information to be lit by ceiling mounted lighting on the verandah and up-lighting where appropriate, to ensure a hospitable environment for visitors.

