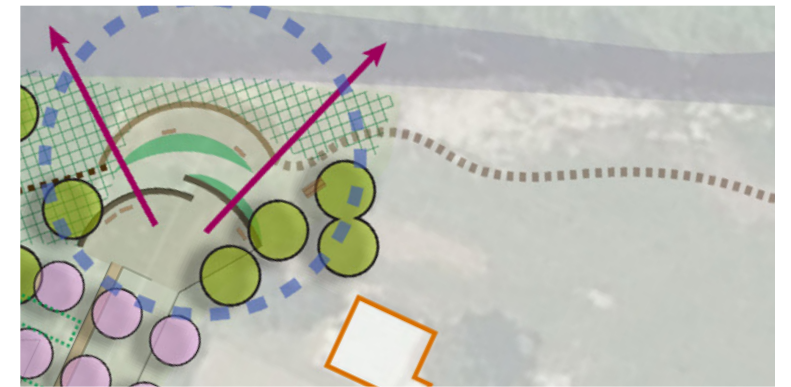
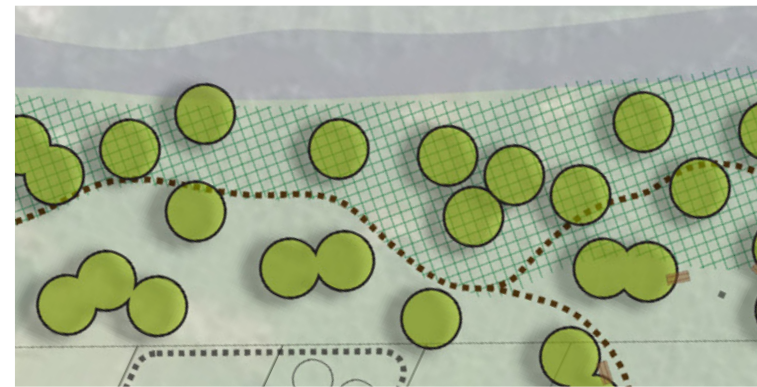
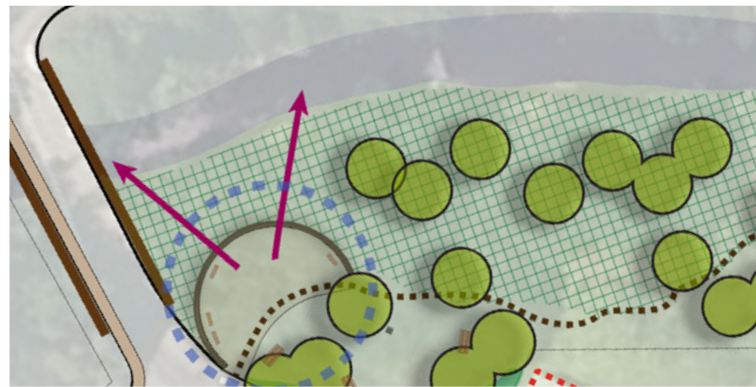


# OHURA TOWN CENTRE

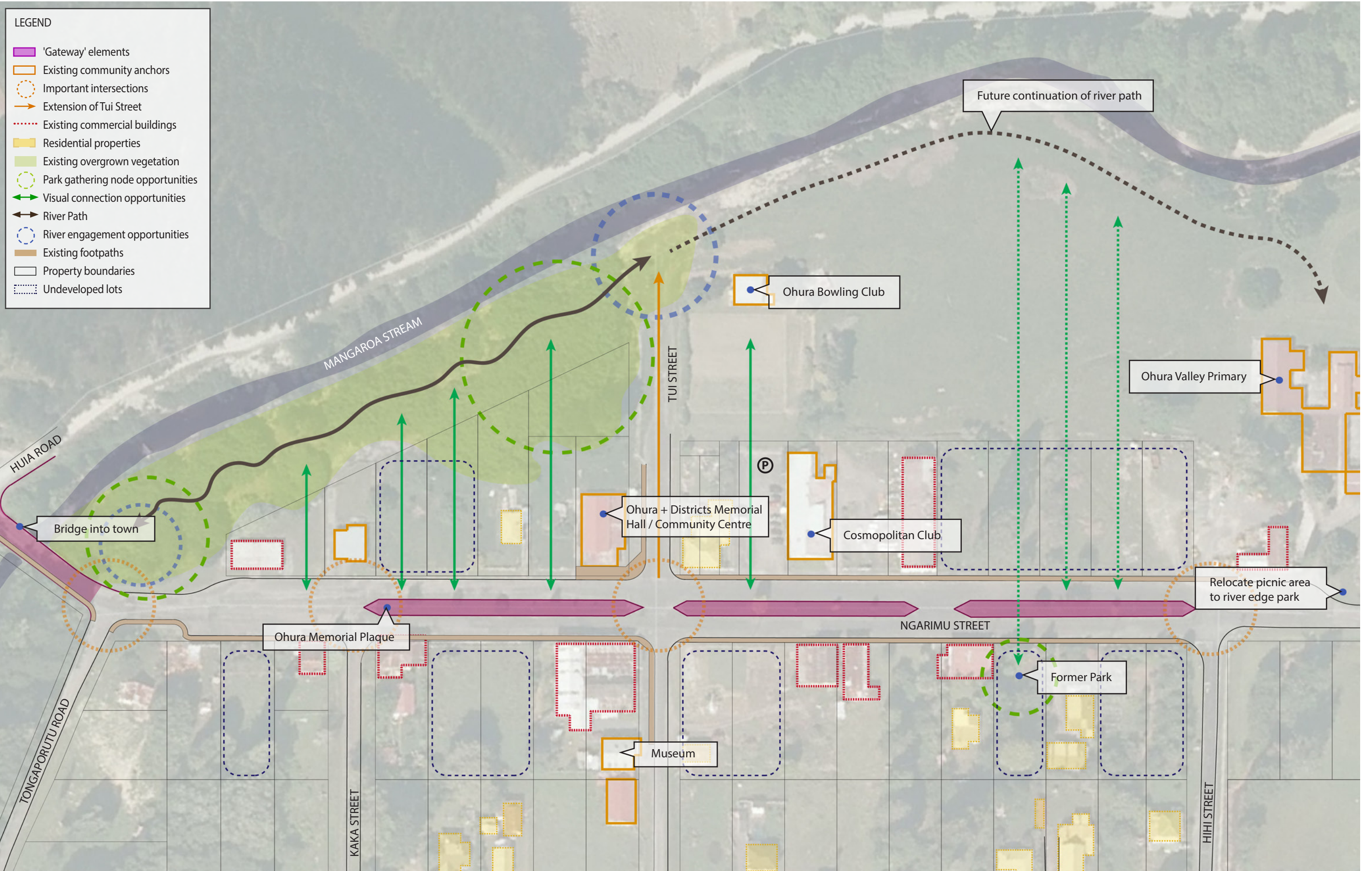
NGARIMU STREET, OHURA



CONCEPT PROPOSAL

December 2016







LEGEND

1. Ngarimu bridge enhancements to create strong gateway into town
2. Scenic river overlook / bridge viewing area
3. Adjacent picnic area
4. Ohura War Memorial to be retained and protected
5. Incorporation of sculptural elements in median to define sense of place
6. Existing trees, options to remove / retain / partially replace
7. River edge trail connection
8. Informal picnic area
9. Enhancements to back of community building to create outdoor community space and park connection
10. Informal camper van parking
11. Termination of Tui Street asphalt, link to river experience feature space through grove of flowering trees
12. Top of bank scenic river overlook
13. River edge immersive experience
14. Opportunity for future continuation of River Edge Trail, connection to school
15. Incorporation of community orchard and green connection
16. Incorporation of community gardens and connection to picnic area

- Proposed Footpath
- River Engagement
- Existing Trees
- Proposed Trees
- Riparian Planting
- Amenity Planting
- Future Expansion Areas
- River Views







RE - purpose underutilized commercial buildings with fun false storefronts, temporary markets, or art installations; and undeveloped open space for pop-up events, town BBQs, and natural play spaces.



RE - invigorate the inherent sense of place in Ohura through materiality, program and indicative planting.



RE - store the health, environmental quality, and recreational usability of Mangaroa Stream by creating a riparian edge of native species.



RE - activate areas close to major community corridors and centres by incorporating gathering space, creative use of undeveloped lots, and tourist stopping opportunities.