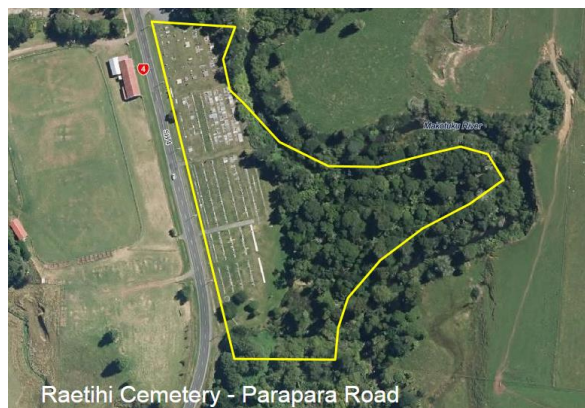


## Locations of Cemeteries

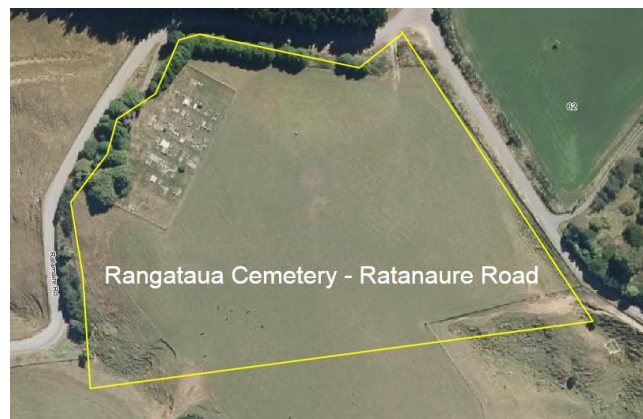
### Ohakune Cemetery



### Raetihi Cemetery



### Rangataua Cemetery



The cemeteries within the Ruapehu District are open 24 hours, 7 days a week and can be visited at any time.

*Rest in Peace (Moe mai ra)*

# A Guide to Cemeteries

In Ohakune, Raetihi and  
Rangataua



Ruapehu District Council  
Private Bag 1001,  
59-63 Huia Street, Taumarunui, 3946



Phone (24 Hours)	07 895 8188 Taumarunui 06 385 8364 Ohakune 06 385 4447 Raetihi
Fax	07 895 3256
Email	<a href="mailto:info@ruapehudc.govt.nz">info@ruapehudc.govt.nz</a>
Website	<a href="http://www.ruapehudc.govt.nz">www.ruapehudc.govt.nz</a>
Facebook	<a href="https://www.facebook.com/ruapehudc">ruapehudc</a>

The information in this brochure is a guide only, and is not a statutory document.

October 2018

## Overview

Ruapehu District Council operates a number of cemeteries within its District.

It is always hard to deal with the loss of loved ones and Council aims to support family and friends with a respectful environment and professional assistance.

## Funeral Directors

Funeral Director	Contact
Keith Haitana Pier 37 Longbeach Drive Castlecliff Wanganui 4501	Ph: (06) 344 6497 Mob: 027 442 7298
Or Refer Wanganui Telephone Directory Yellow Pages	
Taumarunui Funeral Services Ltd Pat & Maureen Horton 34 Huia Street Taumarunui 3920	Ph: (07) 895 7420 Mob: 027 495 6245

## Council's Obligations

- Council will dig and reinstate the grave.
- Some cemetery sections have concrete berms on which all plot memorials/ headstones shall be constructed.
- In cemeteries or sections of cemeteries where there are no concrete berms, memorials can be erected at the head of the grave. Full concrete slab covers are permitted.
- Council will maintain the Cemetery in a tidy state.

## Purchaser's Rights and Obligations

You are entitled to erect, and are obliged thereafter, to maintain memorials/ headstones.

Plinths (concrete base of memorials/headstones) are not to be any higher than 150mm, with clearances on all sides of 150mm. Plinths are to be no wider than 1m on a single plot or 2m on a double plot.

Memorials/headstone heights are not to exceed 0.84m above the berm or slab and are to be constructed only in granite or similar material approved by Council.

Ashes plots vary in shape and width and memorials/ headstones can be erected within the available space, provided there are side clearances on all sides of 150mm.

Shrubs, trees, flower plants, cobblestones and adornments are not permitted to be planted upon any plots. The practice makes it difficult and expensive for Council to maintain the plots.

A permit to install a headstone or plaque must be obtained from Council prior to its erection.

Adornments of any type are not permitted upon any plots, with the exception of vase or plant containers housed in insets within the plinth.

Note: With the exception of Taumarunui and Manunui Cemeteries, Council does not provide beams, site matting and lowering devices required for the interment. Those items may be obtained from local funeral directors if you require them.

A copy of Council's Bylaw NZS9201: Chapter 14:1972, in which Council and Purchase rights and obligations are included, can be obtained on request.

## Frequently Asked Questions

- Q Can I reserve a plot in advance?**  
A Yes, subject to the full purchase price being paid in one lump sum.
- Q Can I pay off a plot?**  
A By special arrangement only.
- Q Can ashes be interred in an existing grave?**  
A Yes. However an Interment Warrant is still required.
- Q How much is it going to cost?**  
A This varies. Please enquire at Council.
- Q Can I erect my own headstone?**  
A Yes, A permit to install a headstone or plaque must be obtained from Council prior to its erection.

